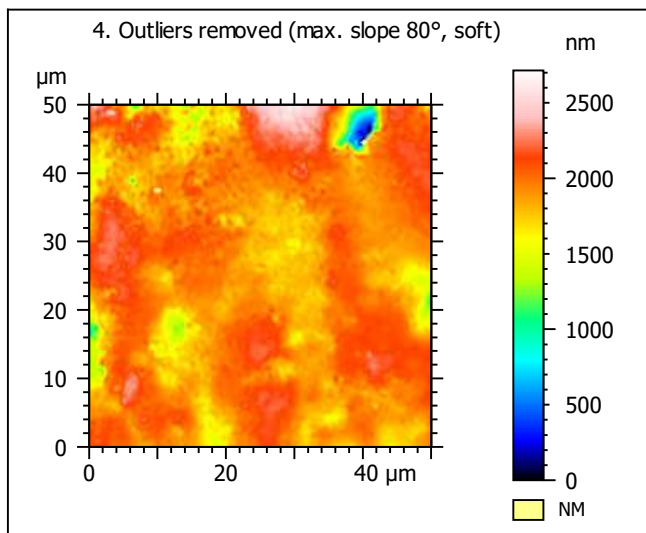
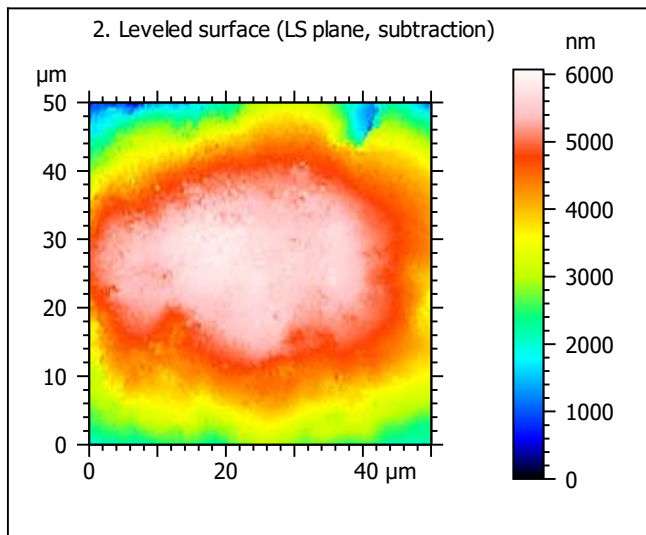
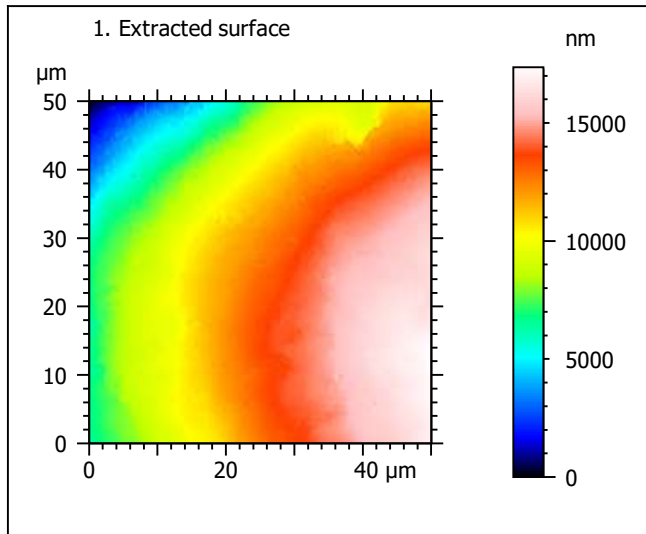
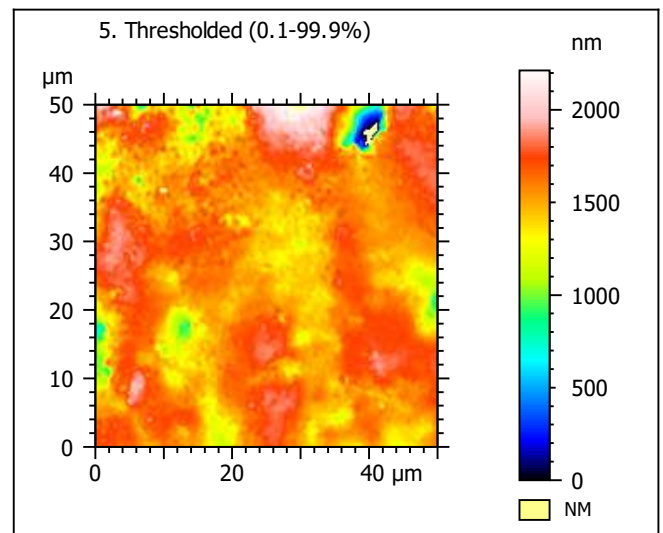
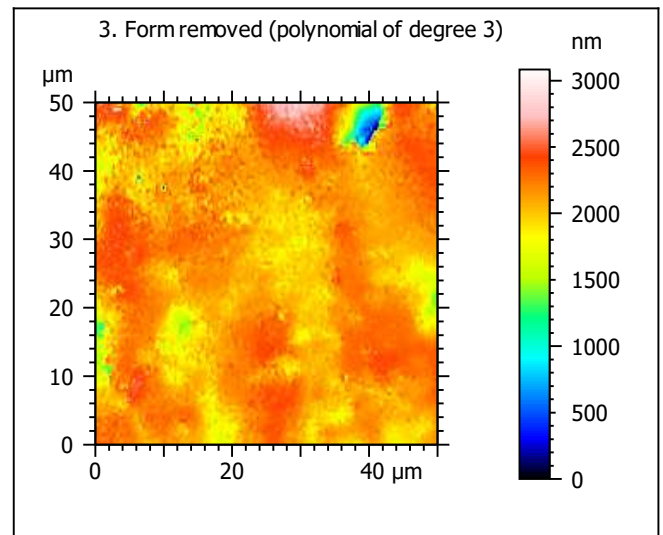


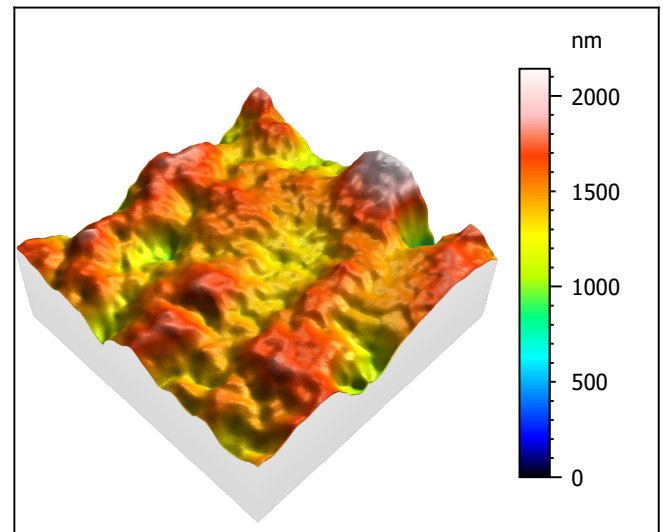
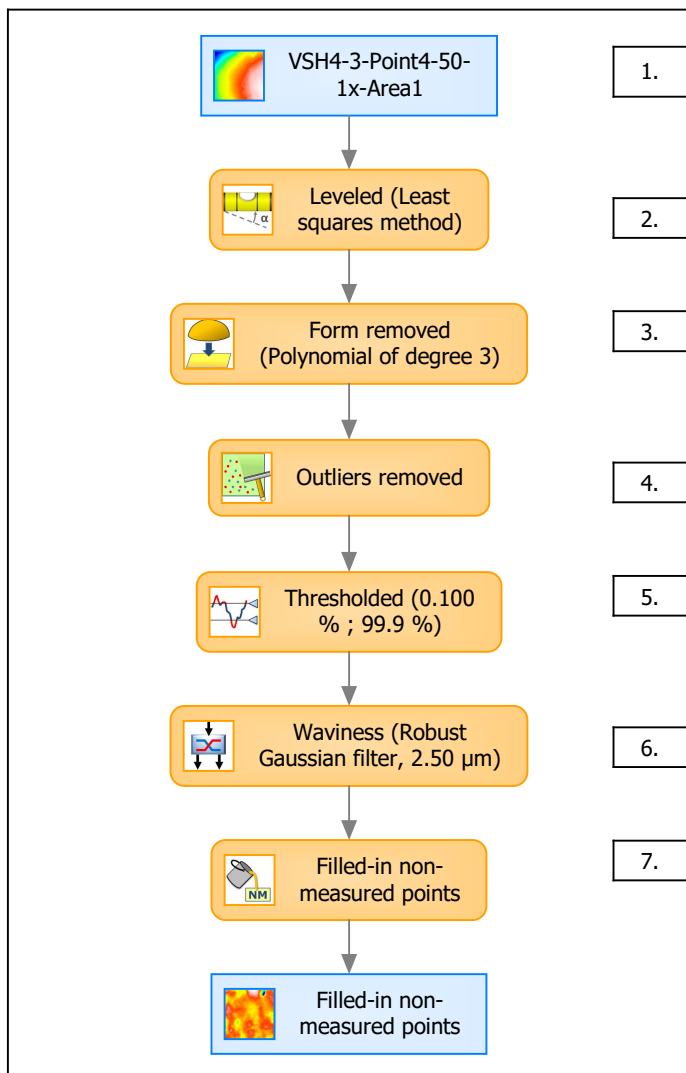
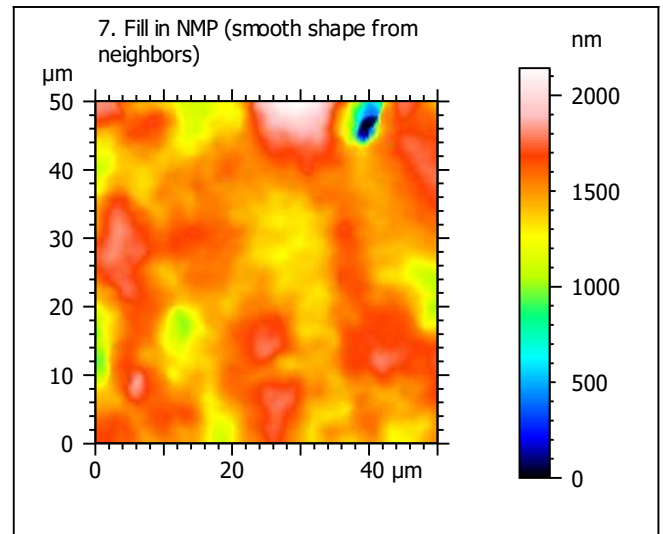
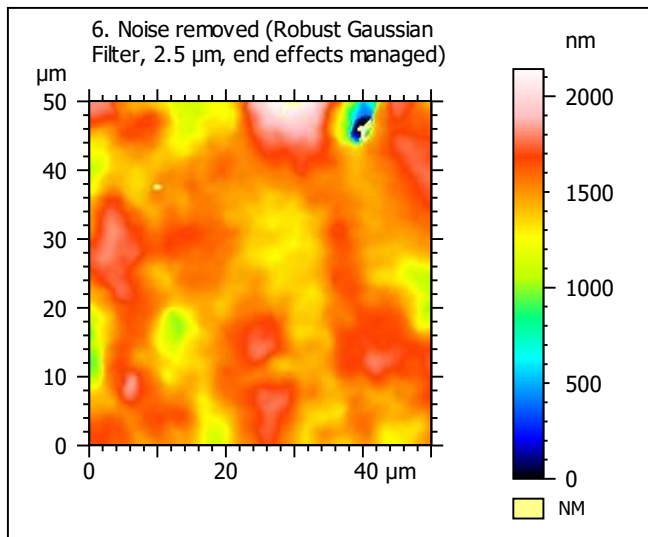
Template to process all extracted 50x50  $\mu\text{m}$  surfaces, acquired with the LEXT 4000 with the 50x/0.95 objective at 1x zoom

## A. Processing



Identity card			
Name:	VSH4-3-Point4-50-1x-Area1		
File path:	D:\Data\Anto...\VSH4-3-Point4-50-1x-Area1.sur		
Axis:	X		
Length:	50.0	μm	
Size:	201	points	
Spacing:	0.250	μm	
Axis:	Y		
Length:	50.0	μm	
Size:	201	points	
Spacing:	0.250	μm	
Axis:	Z		
Length:	17362	nm	
Size:	8080	digits	
Spacing:	2.15	nm	
NMP ratio:	0.00 % (0 Pts)		





Identity card			
Name:	VSH4-3-Point4-50-1x-Area1 > Levelled (Least...		
Axis:	X		
Length:	50.0	μm	
Size:	201	points	
Spacing:	0.250	μm	
Axis:	Y		
Length:	50.0	μm	
Size:	201	points	
Spacing:	0.250	μm	
Axis:	Z		
Length:	2142	nm	
Size:	997	digits	
Spacing:	2.15	nm	
NMP ratio:	0.00 % (0 Pts)		

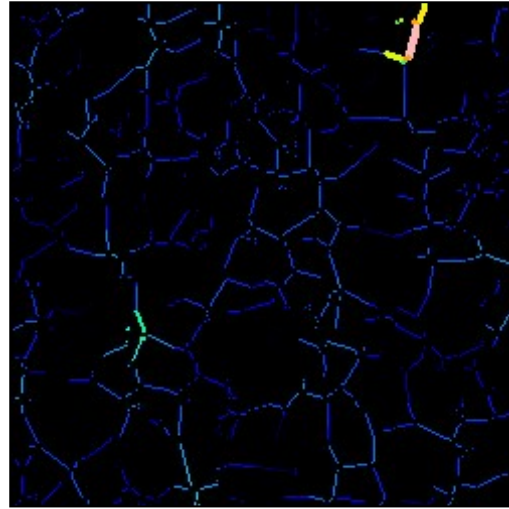
**Analyses:**  
**8. ISO 25178**  
**9. Furrow**  
**10. Texture isotropy and direction**  
**11. SSFA**

## B. Analyses

### 8. ISO 25178-2 parameters on surface #7

ISO 25178		
Height Parameters		
Sq	186	nm
Ssk	-1.55	
Sku	12.8	
Sp	638	nm
Sv	1504	nm
Sz	2142	nm
Sa	132	nm
Functional Parameters		
Smr	97.1	%
Smc	198	nm
Sxp	392	nm
Spatial Parameters		
Sal	3.81	$\mu\text{m}$
Str	0.456	
Std	3.76	$^{\circ}$
Hybrid Parameters		
Sdq	0.113	
Sdr	0.554	%
Functional Parameters (Volume)		
Vm	0.00842	$\mu\text{m}^3/\mu\text{m}^2$
Vv	0.206	$\mu\text{m}^3/\mu\text{m}^2$
Vmp	0.00842	$\mu\text{m}^3/\mu\text{m}^2$
Vmc	0.137	$\mu\text{m}^3/\mu\text{m}^2$
Vvc	0.179	$\mu\text{m}^3/\mu\text{m}^2$
Vvv	0.0271	$\mu\text{m}^3/\mu\text{m}^2$

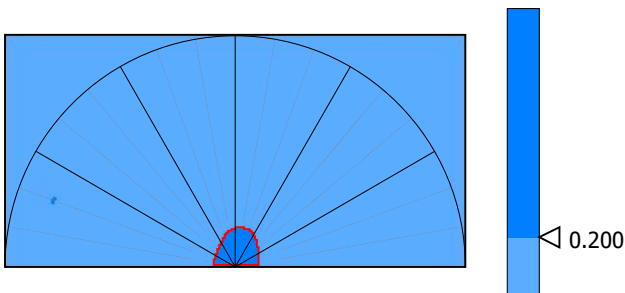
### 9. Furrow analysis surface #7



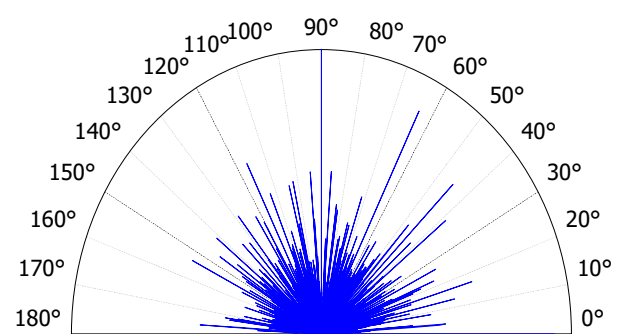
All furrows are shown.

Parameters	Value	Unit
Maximum depth of furrows	1182	nm
Mean depth of furrows	170	nm
Mean density of furrows	2368	cm/cm2

### 10. Texture isotropy and direction on surface #7



Parameters	Value	Unit
Isotropy	54.9	%
Periodicity	20.1	%
Period	21.1	$\mu\text{m}$
Direction of period	160	$^{\circ}$



Parameters	Value	Unit
Isotropy	45.6	%
First Direction	90.0	$^{\circ}$
Second Direction	0.207	$^{\circ}$
Third Direction	63.5	$^{\circ}$

